

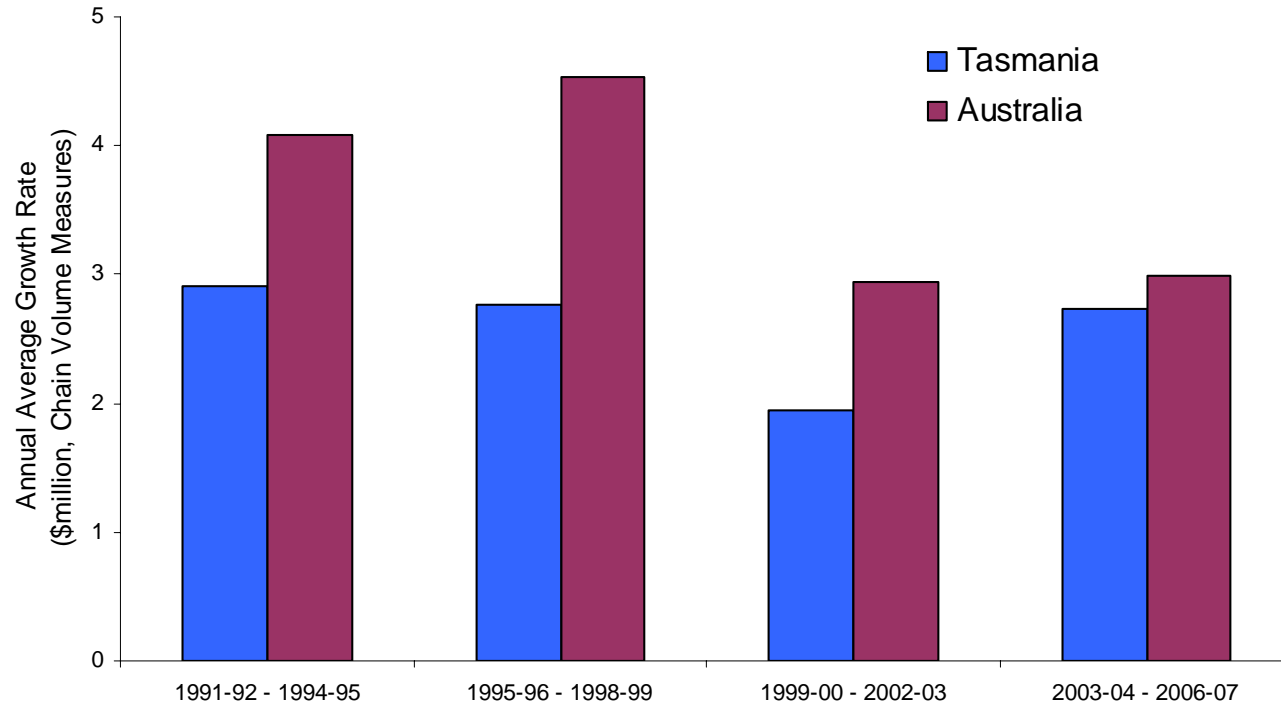
Tasmania's Economy 2008 and Beyond

Rob Nicholl
Deputy Secretary
Department of Treasury and Finance

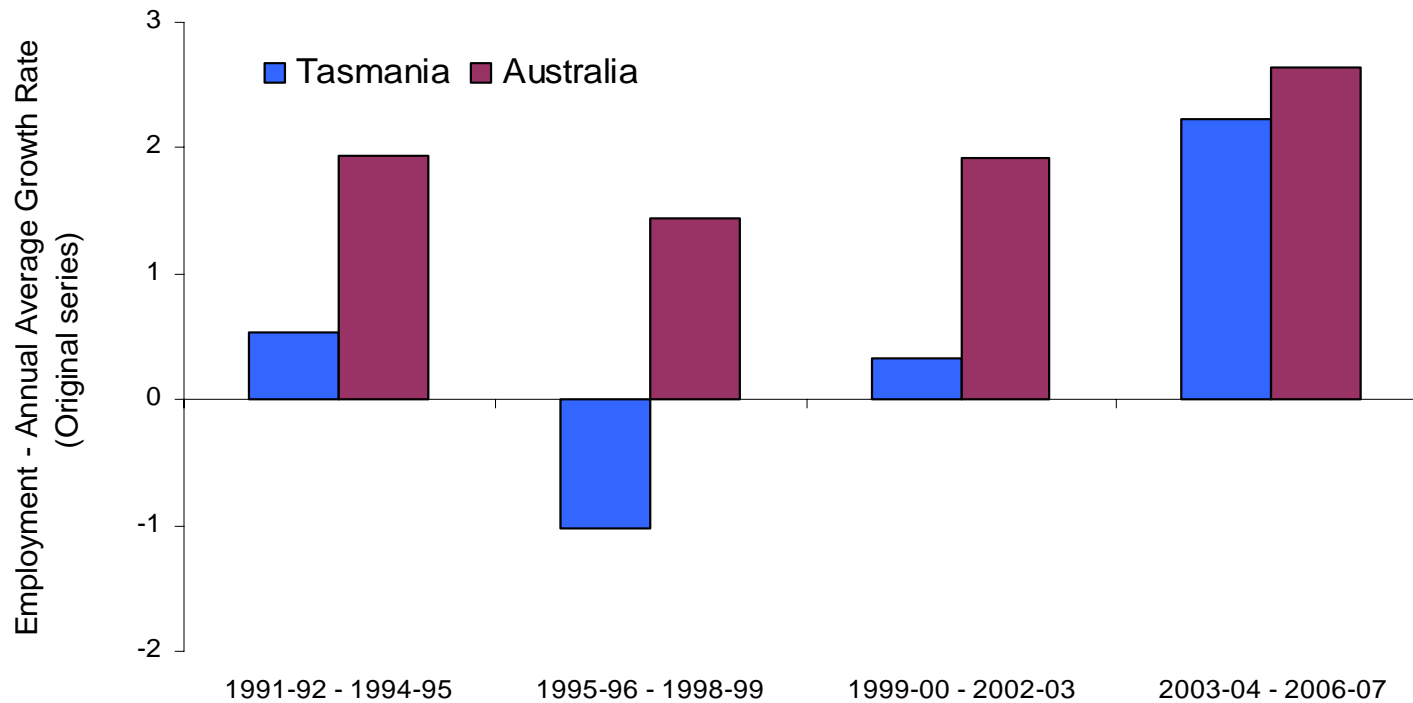
Department of Treasury and Finance



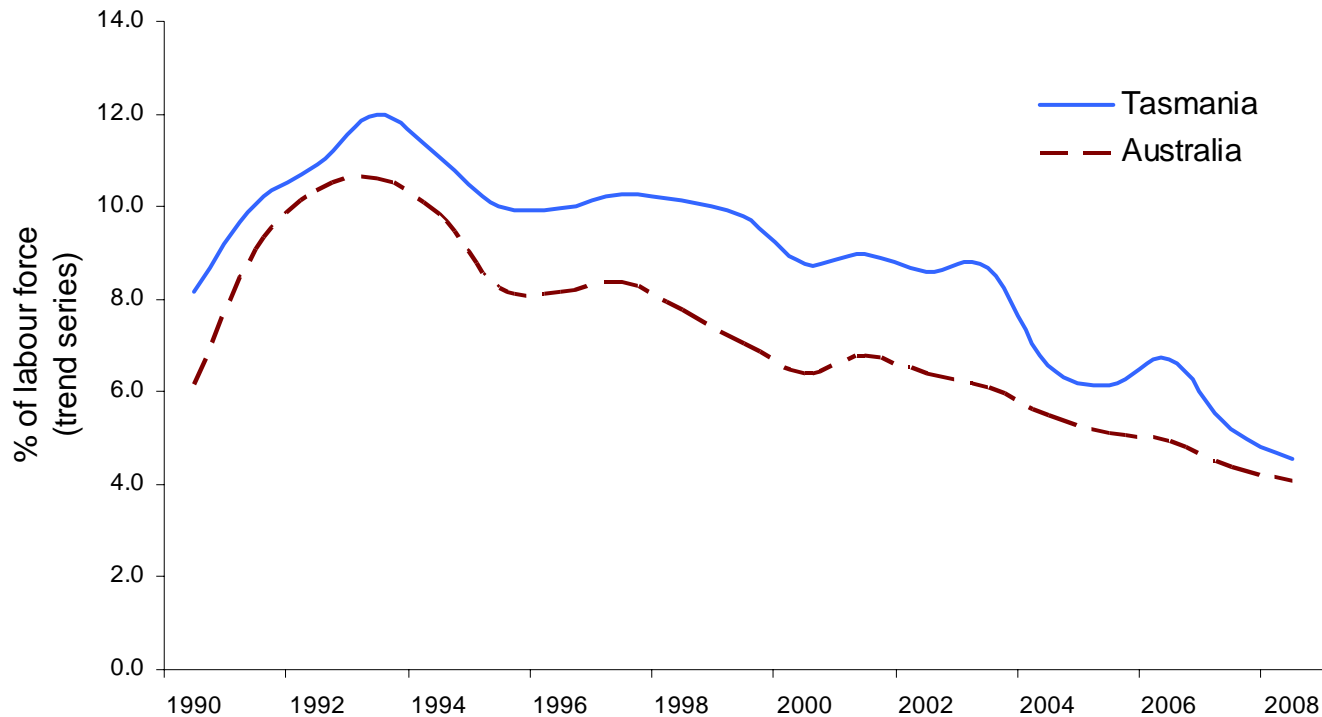
Recent strong growth in GSP



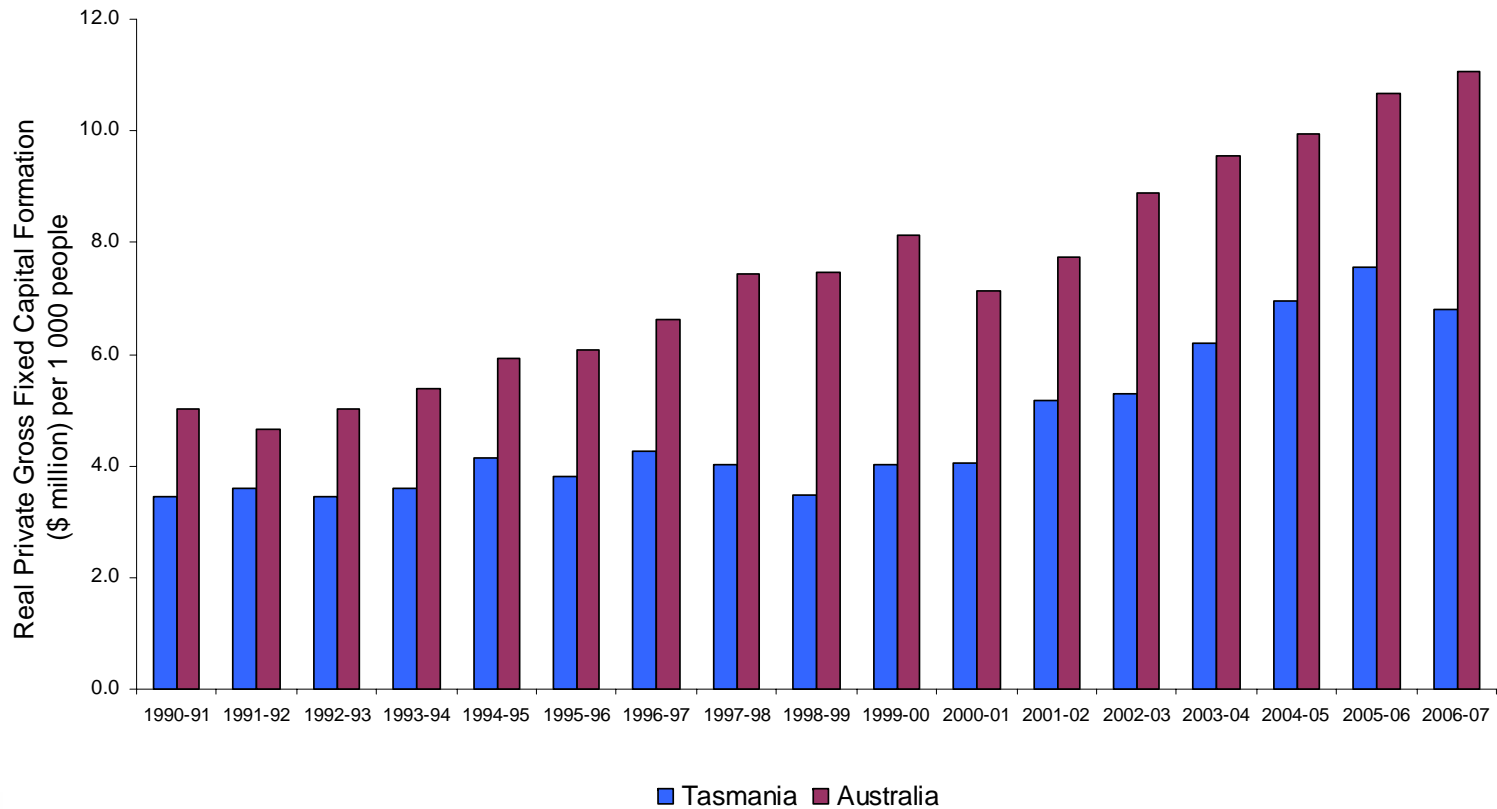
...and strong growth in employment



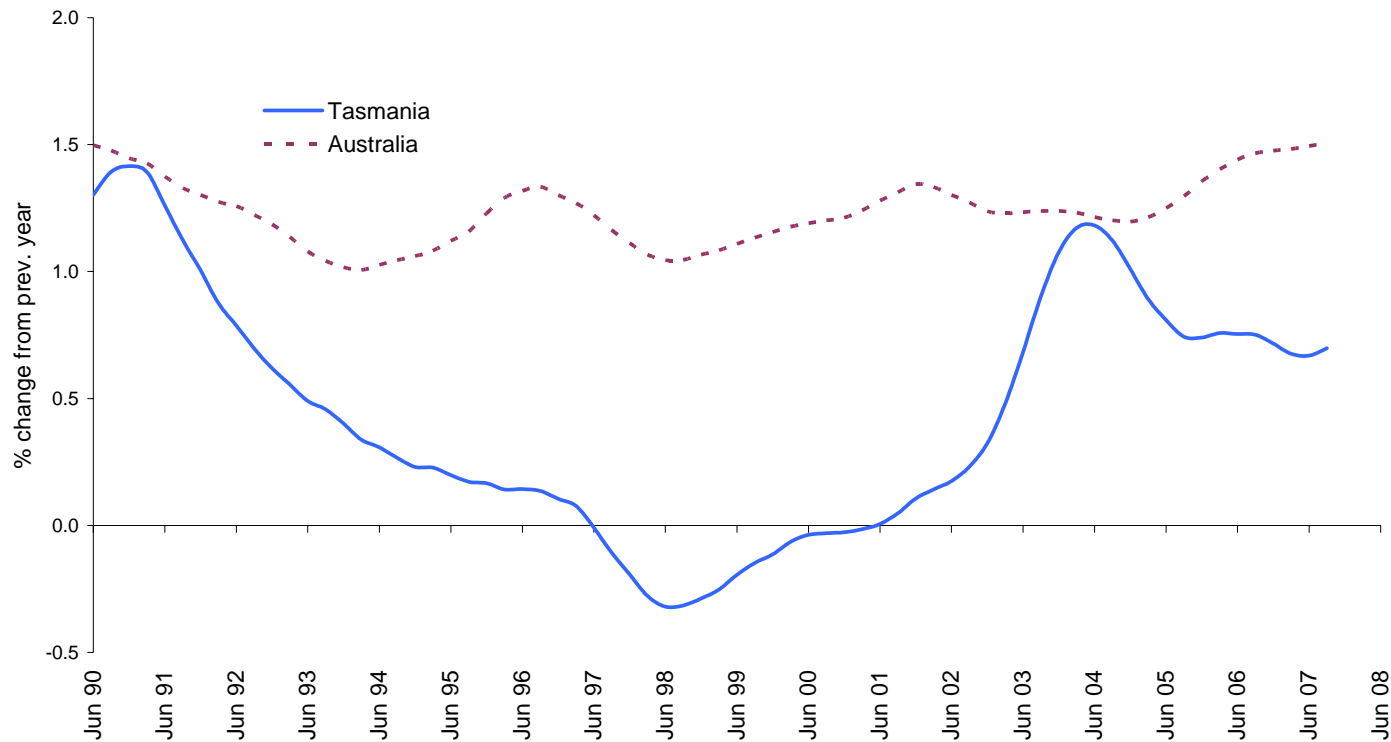
Decline in unemployment in recent years



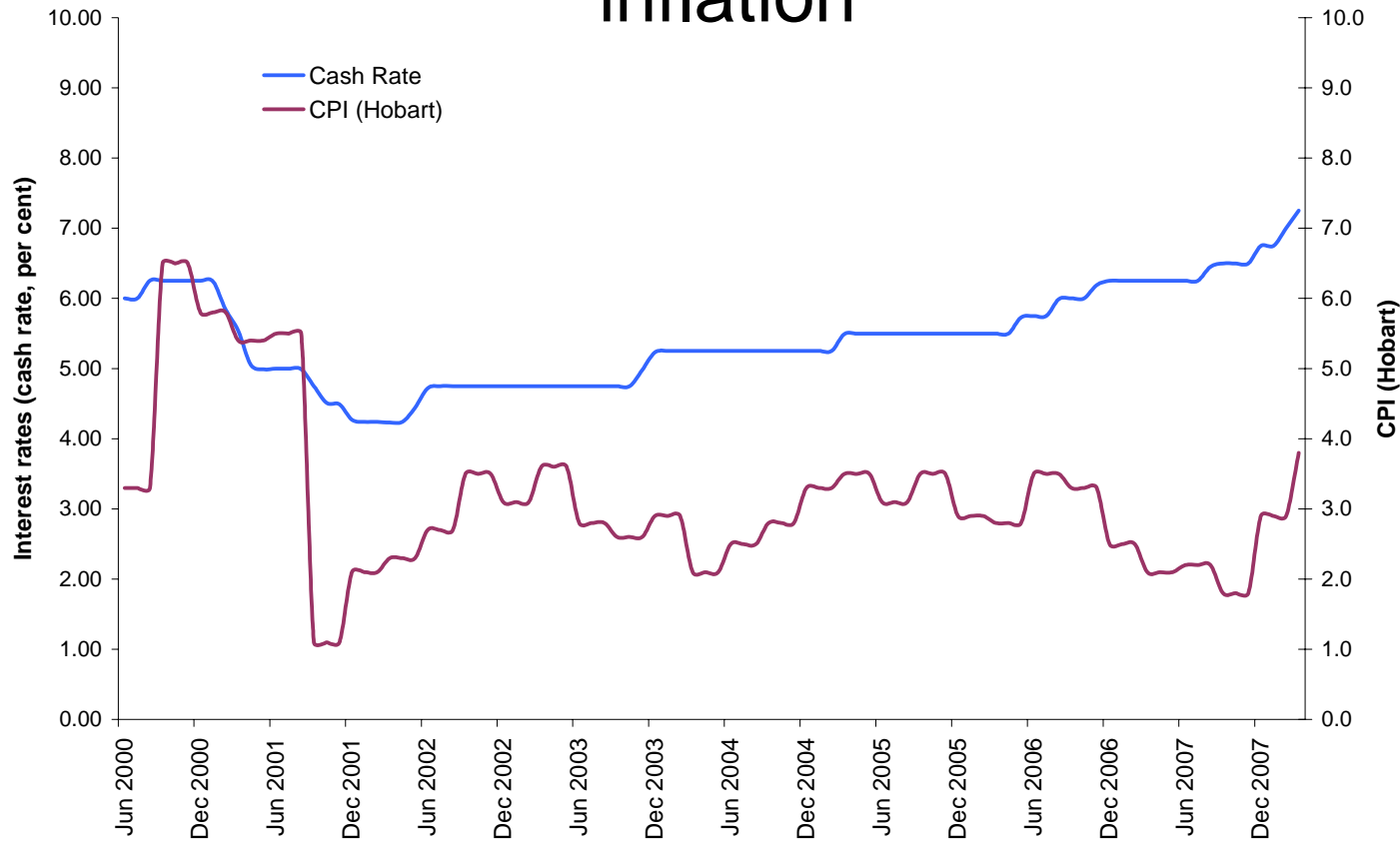
Significant private sector investment in last decade



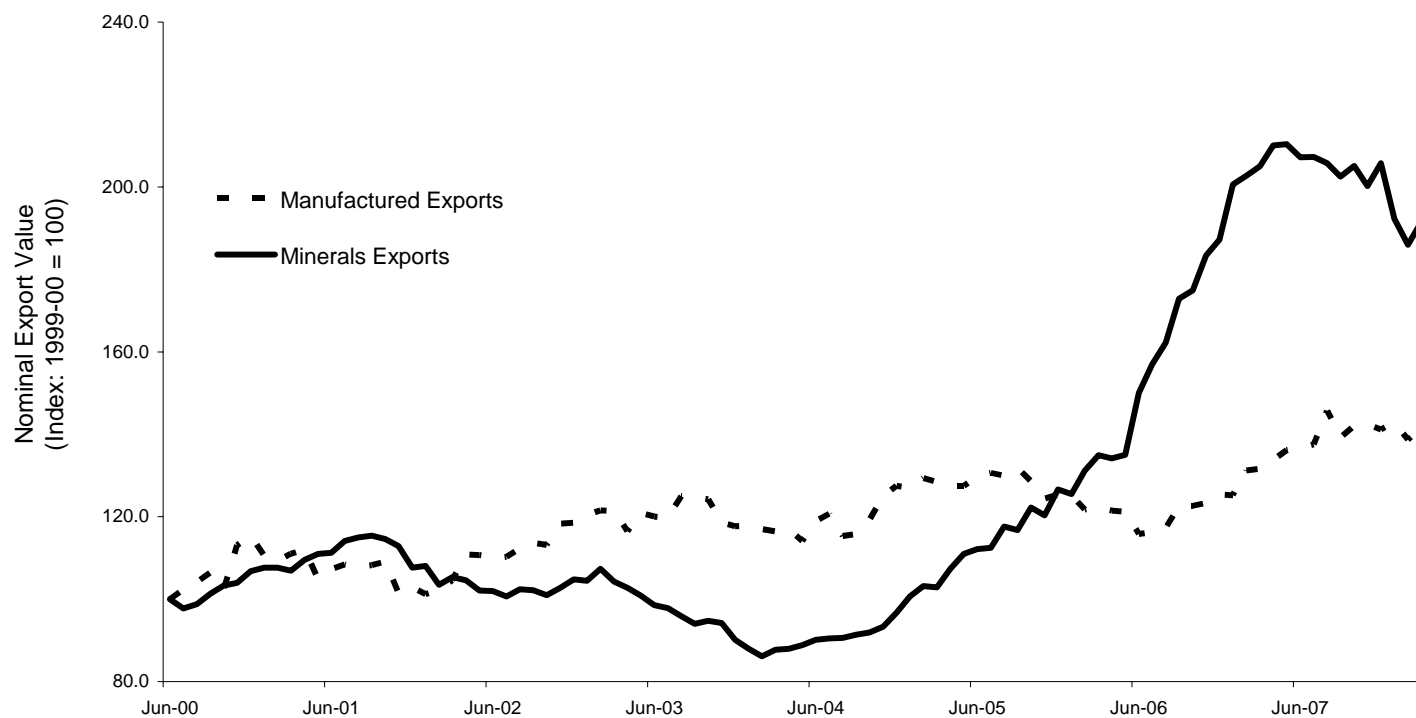
Population growing again, though easing recently



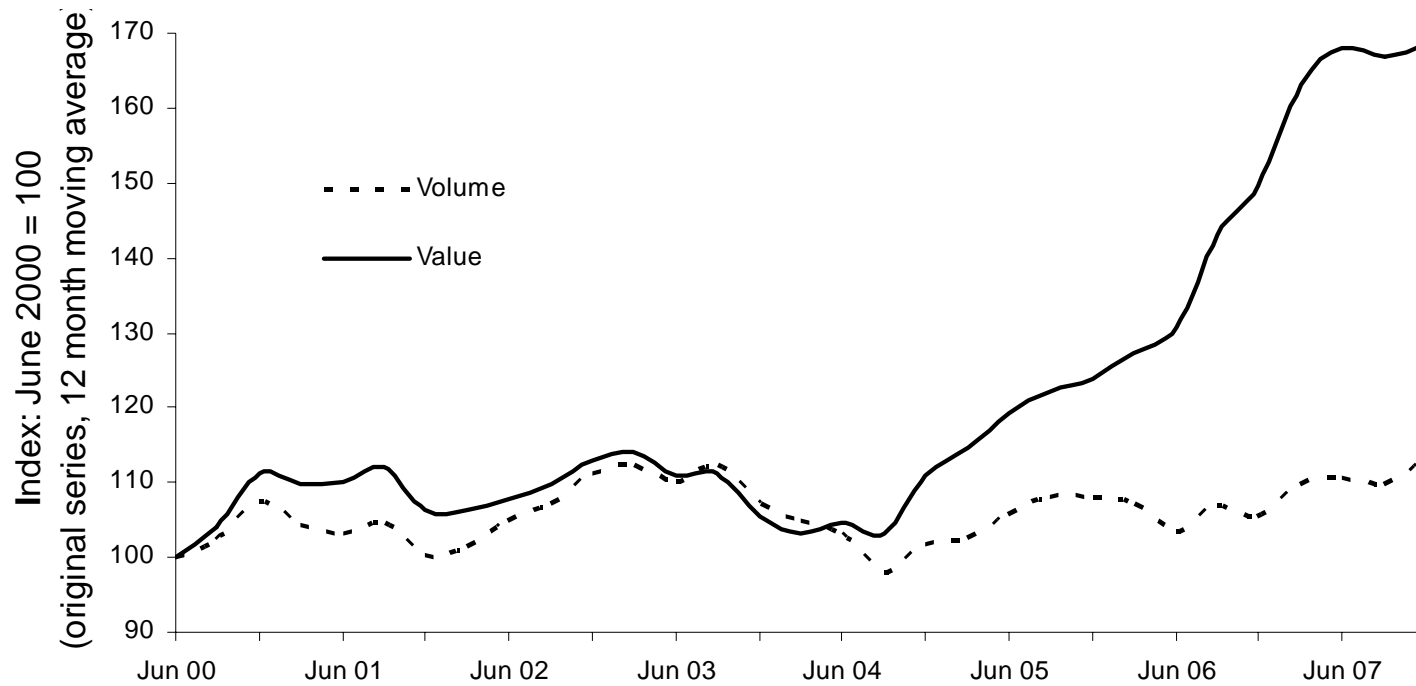
An emerging context of rising interest rates and inflation



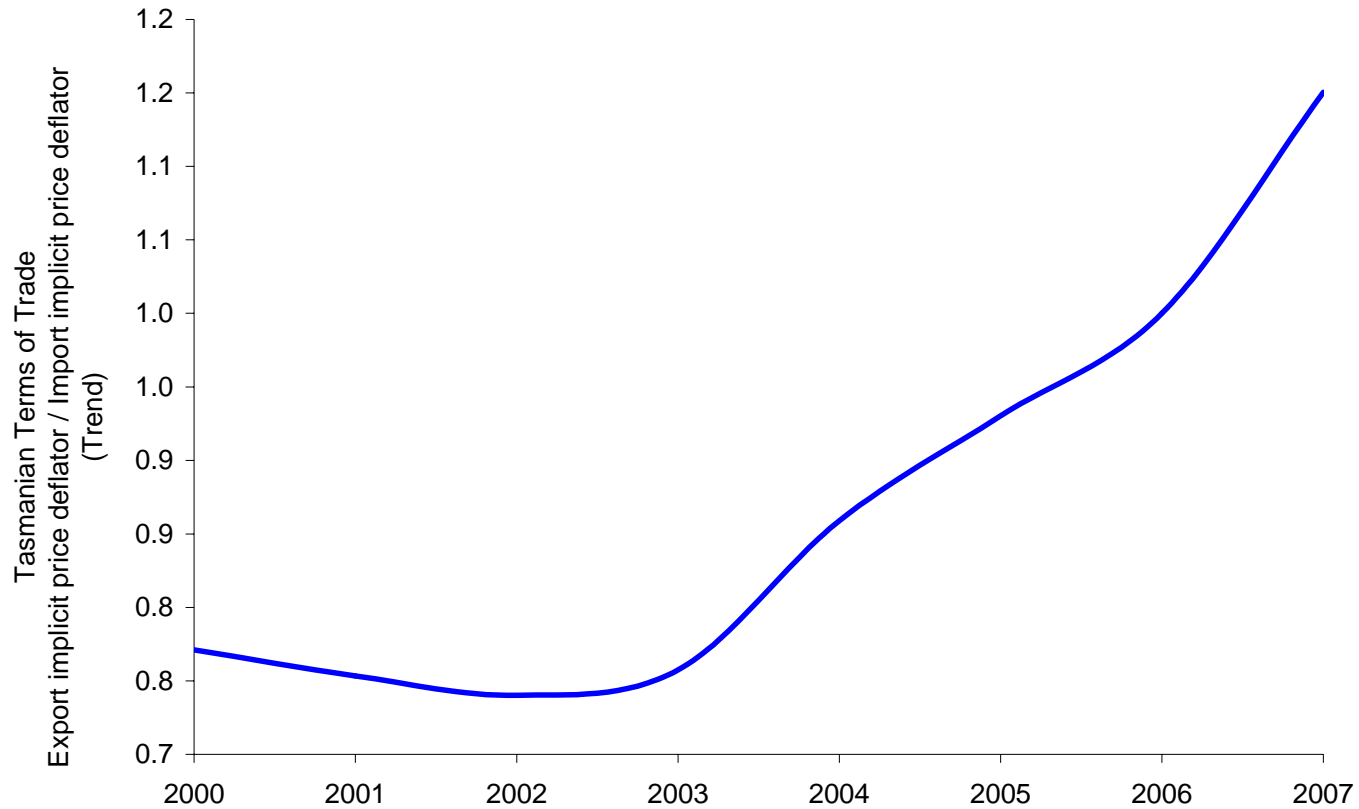
Value of exports underpinned by growth in the value of mineral exports



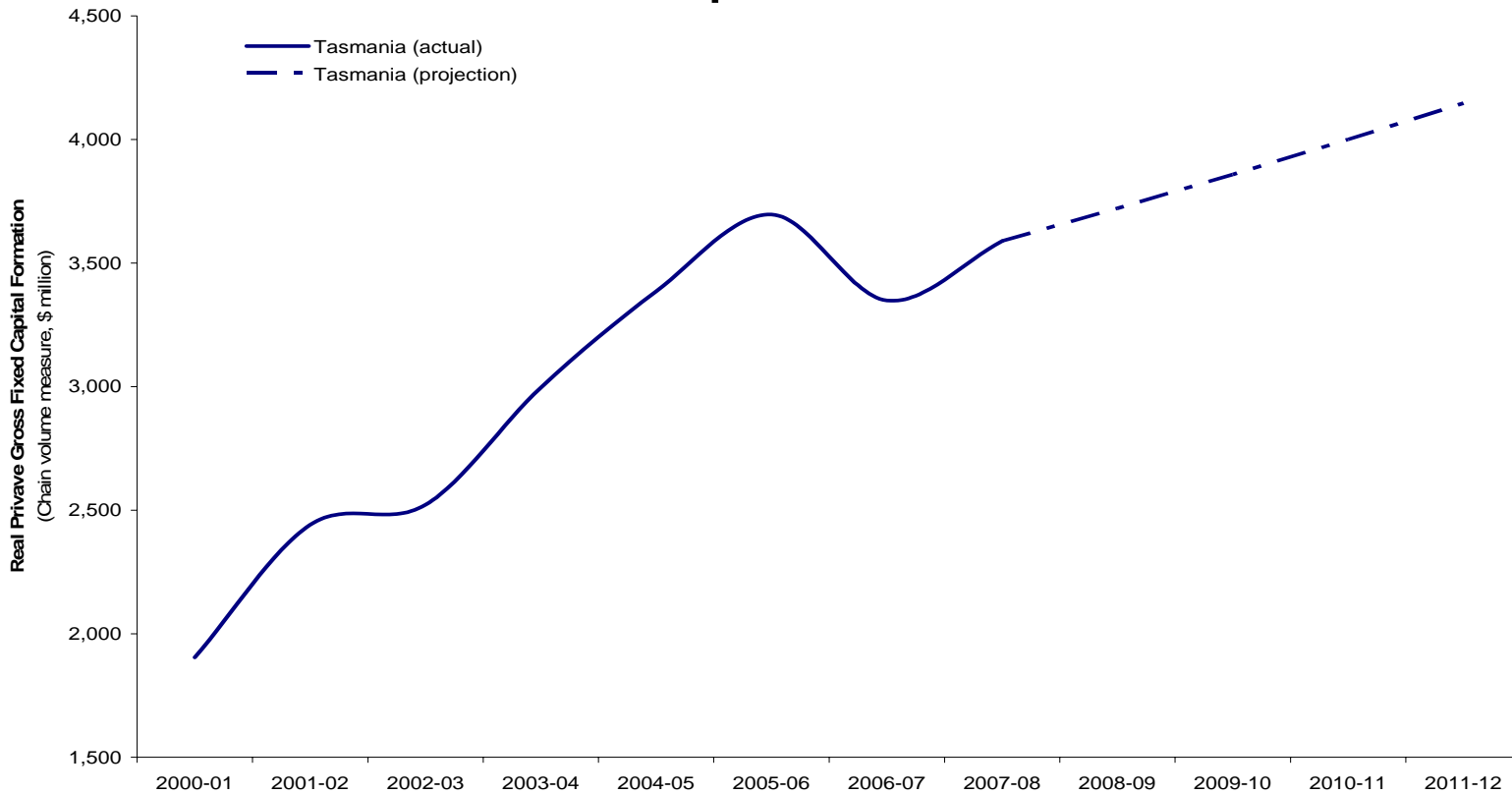
...as shown through International Merchandise Exports – Volume and Value (CPI adjusted)



Terms of trade are strong



If past trend continues, positive investment is expected



...and employment

