

# Tasmanian Minerals Conference

12 - 14 May 2010

Country Club Tasmania, Launceston

## Vedanta – Copper Mines of Tasmania Mount Lyell update

**PRESENTER: Geoff. Cordery**



Tasmanian  
Minerals Council  
Limited

*In association with*



Tasmania

Explore the possibilities

Mineral Resources Tasmania

Department of Infrastructure Energy and Resources

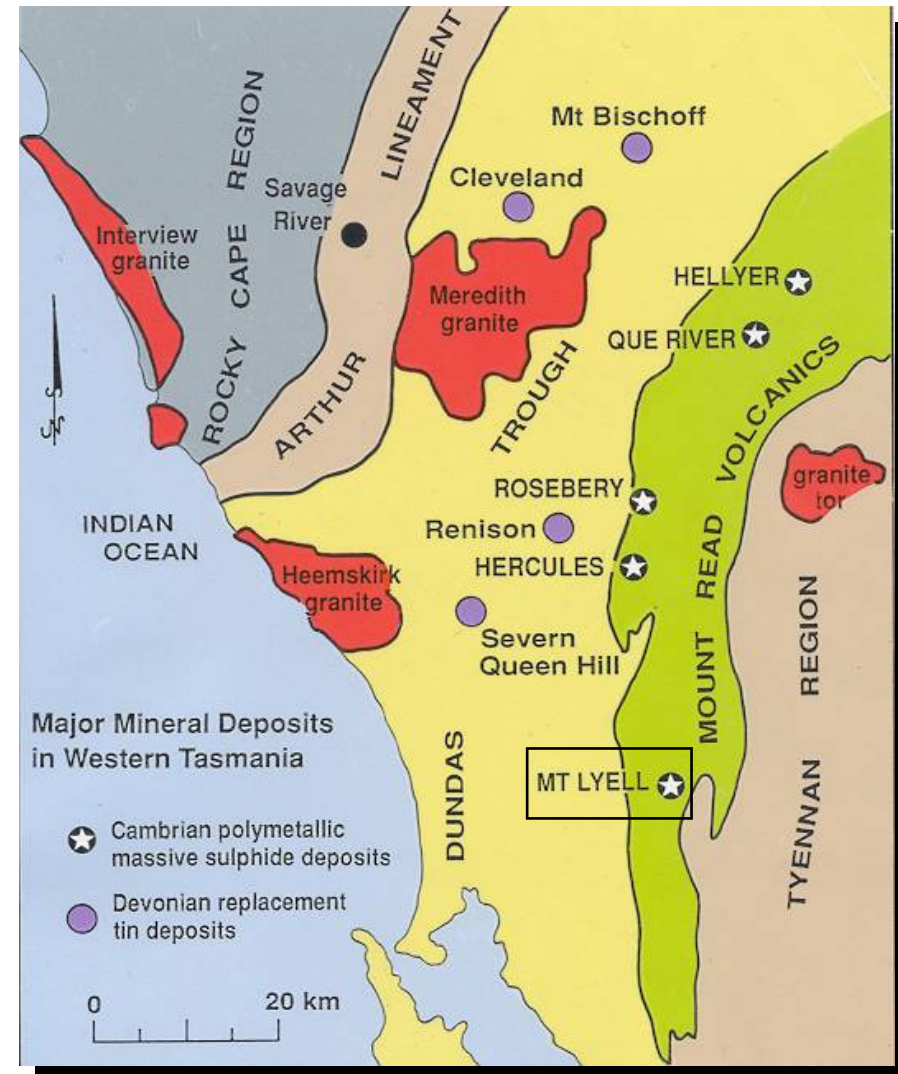
**Copper Mines of Tasmania**



**vedanta**

# Outline

- History
- Vedanta Resources
- Current operations
- Potential developments
- Exploration
- Environment



# History

- Discovered in 1880's
- Five major orebodies
- Mined & treated > **147 Mt ore**
- Produced **1.8 Mt Cu**,  
2.2 MOz Au, 1,300 t Ag
- Mineralised field 6 X 2 km
- Old MLM&R Co closed 1994
- Reopened as CMT 1995 (>33 Mt)
- Environmental legacy  
responsibility of State (CMT  
Agreement 1999)





**vedanta**  
resources plc

- CMT acquired by Vedanta in 1999
- Vedanta - London SEx (FTSE 100)
- Mines & smelters in India, Africa, Europe & Australia
- Major refiner and miner of Cu, Zn, Al  
Interests in cable, iron, electricity
- This week acquired Anglo Americans Zn assets (\$US1.3B)
- Worlds largest integrated Zn & Pb producer

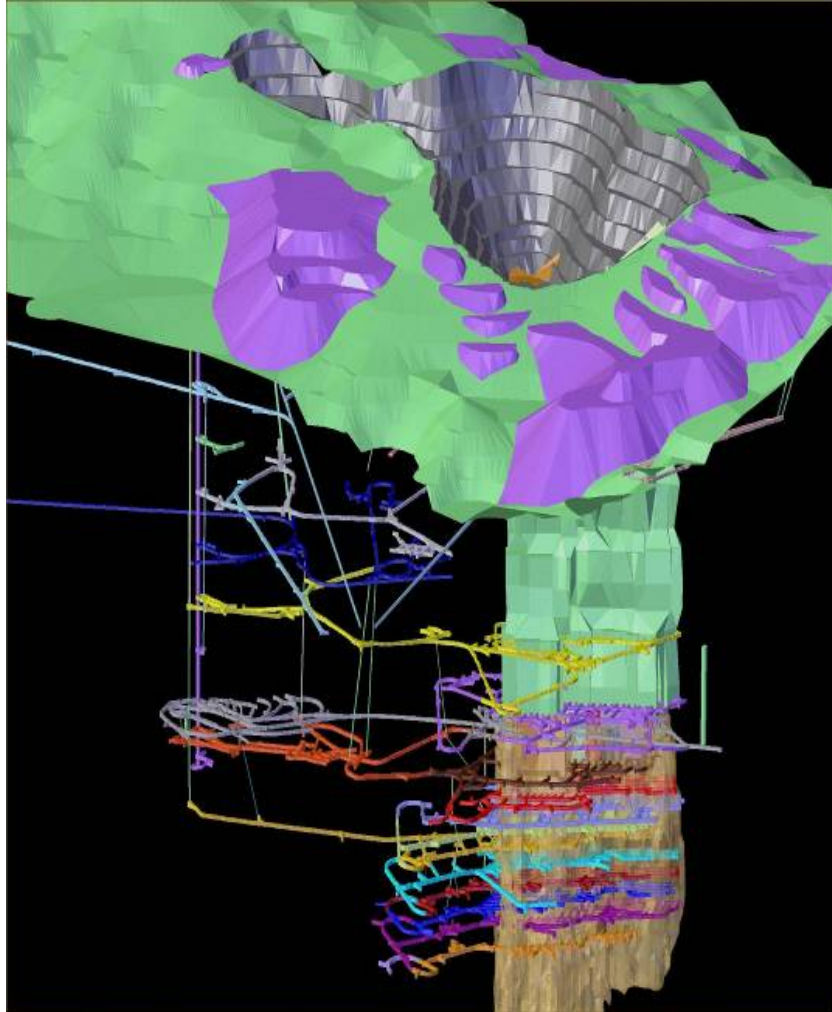
2009 – '10 production

Zn	578 kt
Cu	531 kt
Al	533 kt
Pb	64 kt
Fe ore	20 Mt

**Copper Mines of Tasmania**



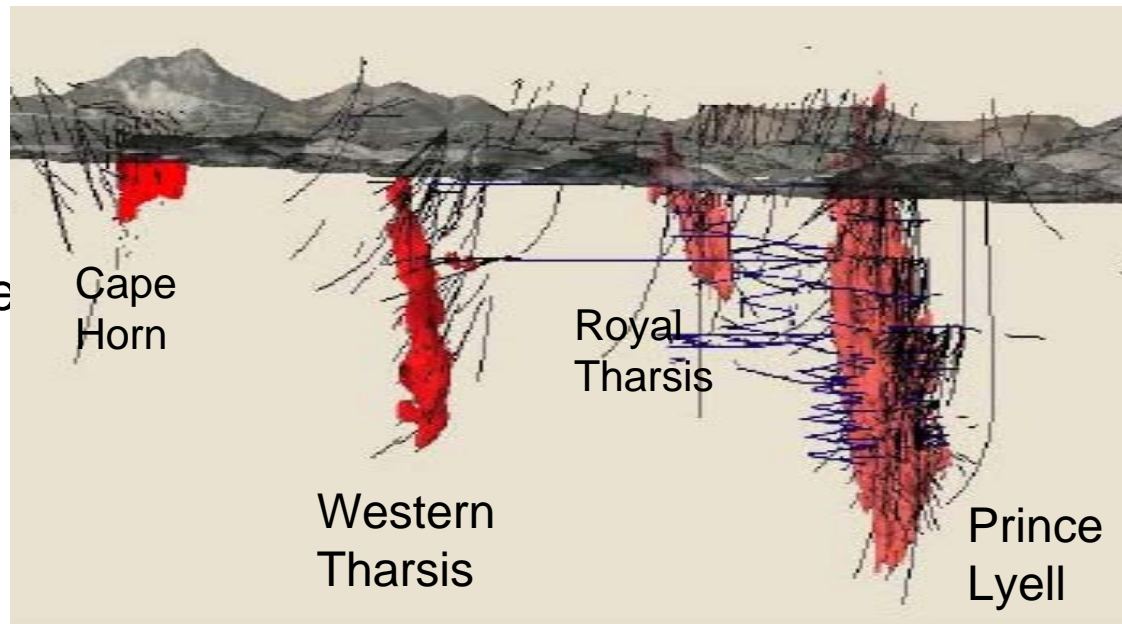
# Current operations



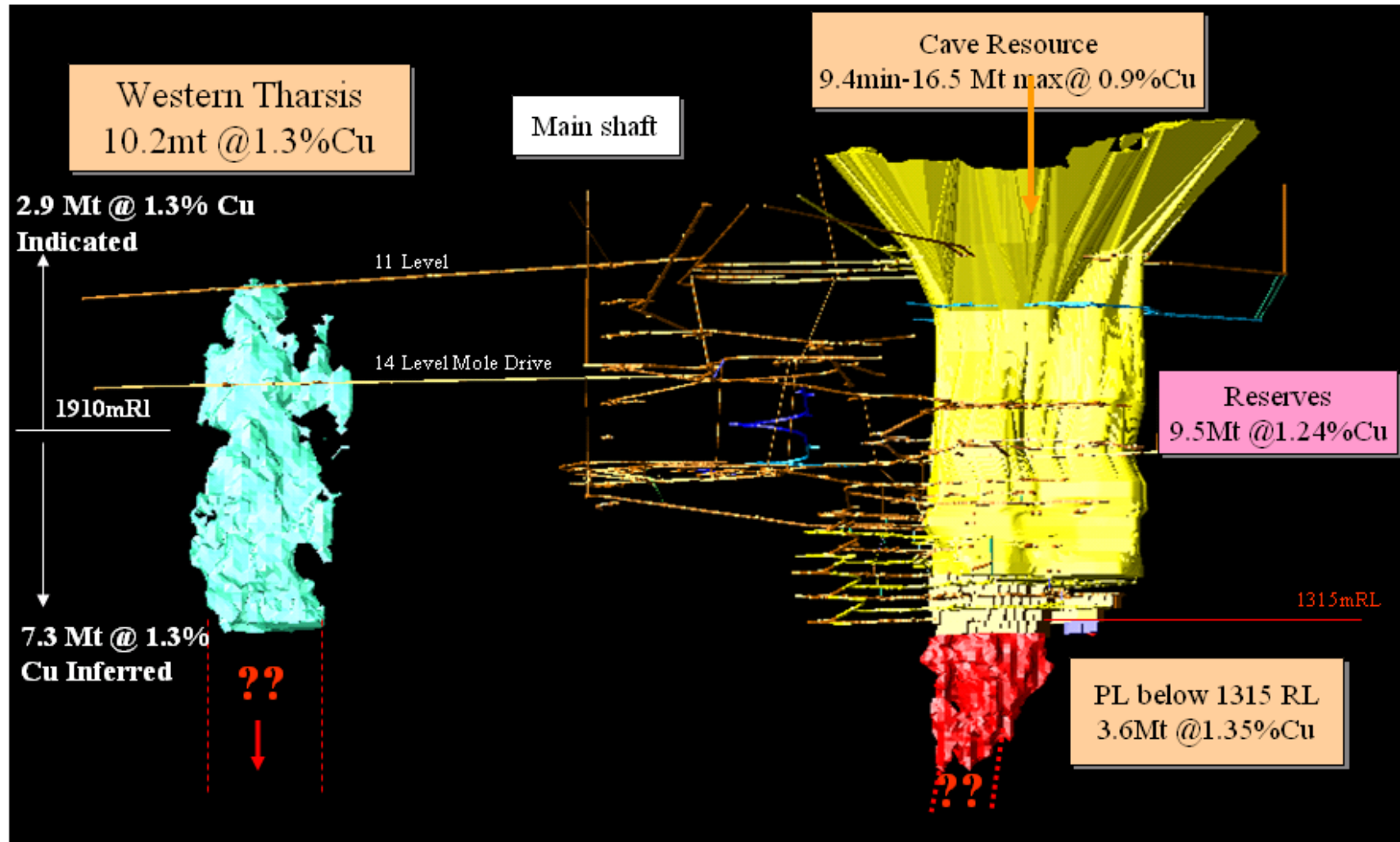
- 2.7 Mtpa @ 1.25% Cu
- Sub level caving method
- Current 1 km depth
- Contract mining
- Conventional crush – grind – flotation circuit – conc to India
- Proven & Probable ore reserve **9.5 Mt @ 1.24% Cu**
- Total Resource *(incl reserves)*  
**32.7 Mt @ 1.2% Cu**
- Actively seeking opportunities

# Potential developments

- First priority – develop **Western Tharsis**
  - Long known resource, Drilled by CMT mid 1990's
  - 500m from Prince Lyell shaft
  - Drilled out resource, 10Mt @ 1.3 % Cu, open
  - Scoping complete, feasibility study to commence soon
  - High cost compared to current operations
- Cave resource
  - 9 to 16 Mt broken rock in "silo"
- Tasman Crown
  - Zn-Pb-Ag resource
- Copper Clays
  - supergene
- "Super pit"
  - Halo remnant



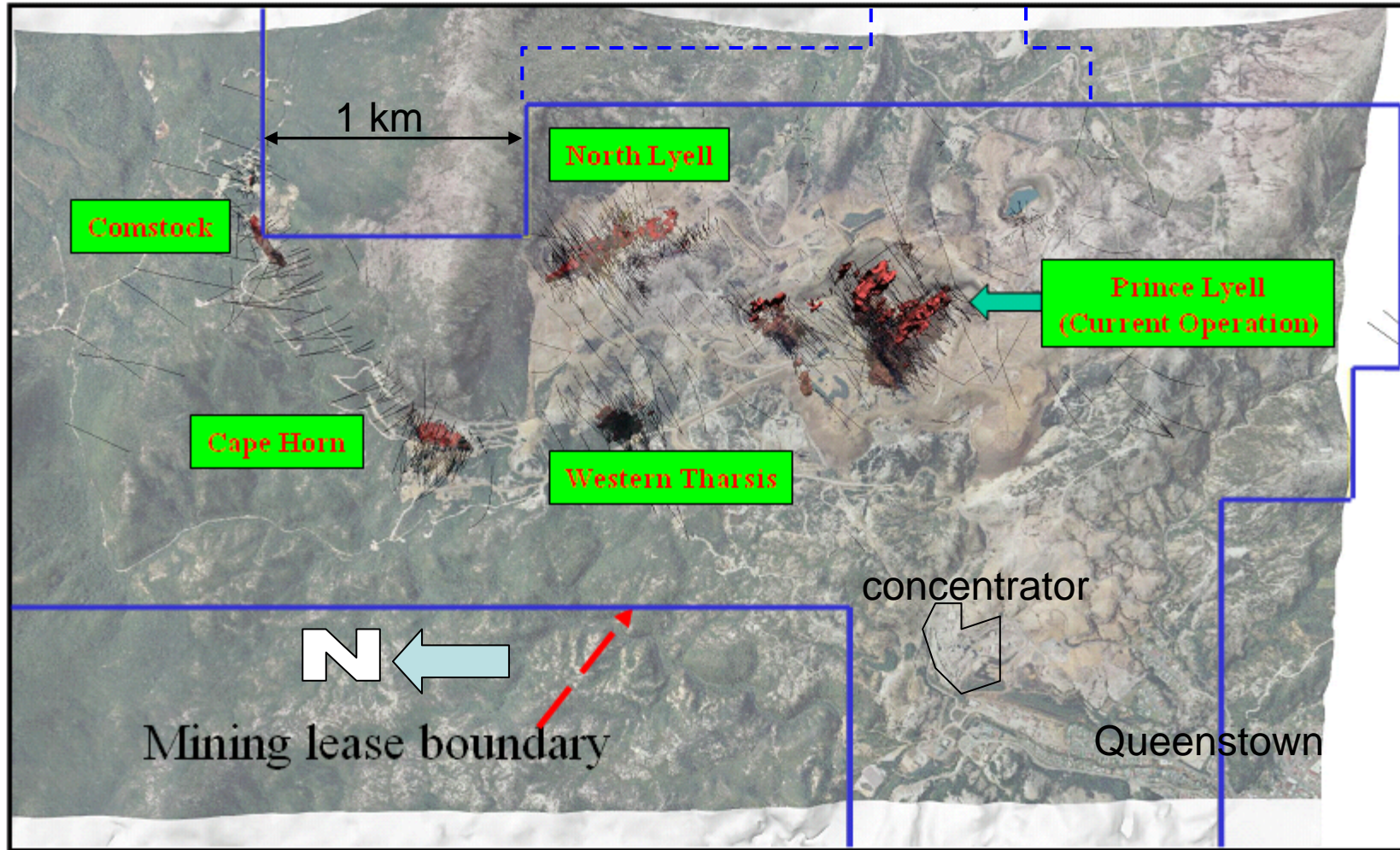
# MINERAL RESOURCES AND ORE RESERVES (as at March 31<sup>st</sup> 2010)



Copper Mines of Tasmania



# PLAN VIEW OF MINING LEASE (Showing the relative positions of mineral deposits)

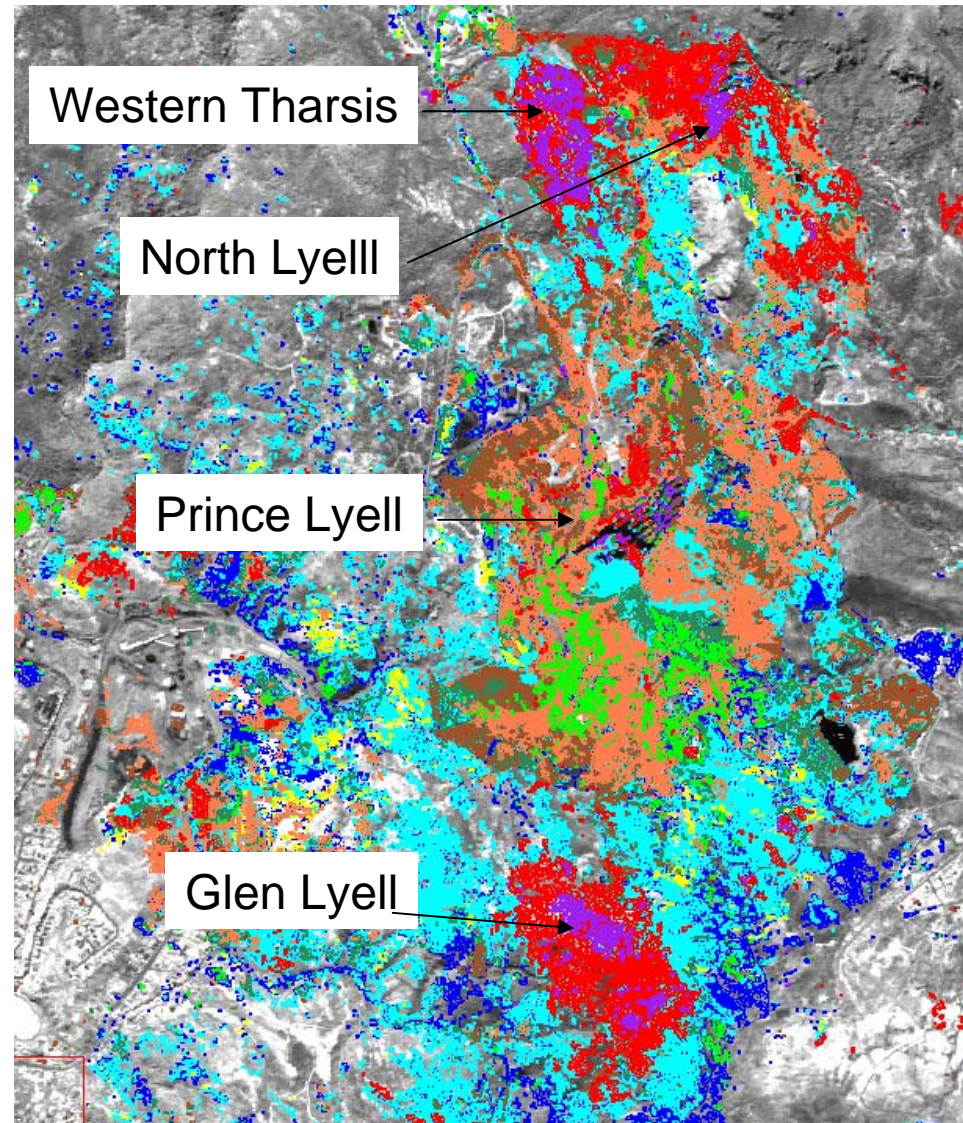


# Exploration

- Large known resources
- Continuing exploration
  - Copper Clays
  - Comstock (20m @ 2% Cu)
  - Hymap targets
    - Glen Lyell
  - Henty style gold targets
  - Tasman Crown repeats
  - Depth extensions

## **HYMAP infrared survey**

Red-pyrophyllite, purple-topaz,  
light blue -muscovite, dark blue- phengite,  
green chlorite, orange-Jarosite.



**Copper Mines of Tasmania**



# Environment

- Mount Lyell has large enviro legacy
  - 120 years of prospecting & mining
  - Pre 1999 responsibility of Tas Government
- Lesson in how not to explore or mine
  - Loss of soil & vegetation
  - Waste rock dumps
- 22 GL pa acid drainage
- 2 tonnes Cu per day in solution
- Current operation Best Practice
  - Many improvements
- Government project to treat acid drainage stopped by Federal Government, funds re-directed to Fox Taskforce



# Thank You



Copper Mines of Tasmania

